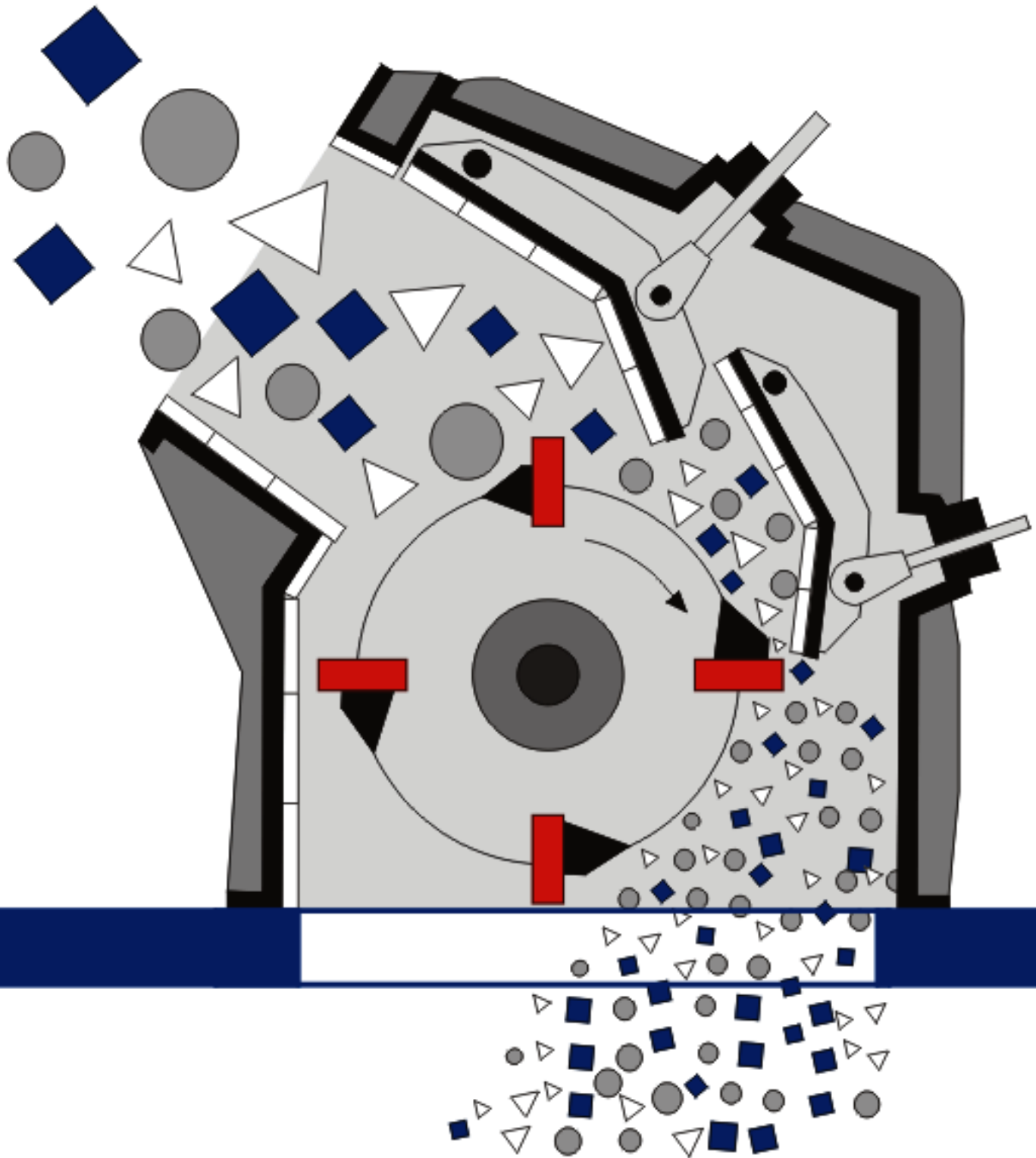


TECPRO



## IMPACT CRUSHERS

PRODUCT DIVISION, TECPRO SYSTEMS (P) LTD.

Under License From

**FAM**

Förderanlagen Magdeburg  
GERMANY



## Crushing of moderately hard to very hard raw materials...

### Function

- TECPRO-FAM Impact Crushers crush the feed by the reciprocal effect of shock and impact.
- Rotating baffle plates pick up the material and fling it against the armoured impact vibratos.
- During the impact the material is split at the natural cleavage faces to become cubical final products without cracks.



### Pros

- rugged structural shape
- easy maintenance
- high throughput
- high degree of crushing
- insensitive to foreign substance

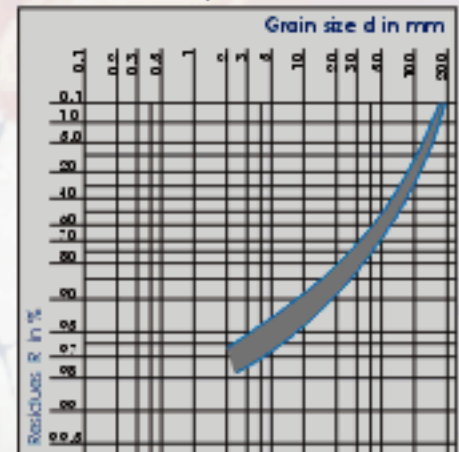
### Design

- welded rugged casing
- screwed lining with high-carbon steel plates
- hydraulically swiveling upper part
- detachable connection of disk-type rotor and shaft
- replaceable baffle plates, quadruple exploitation
- dust proof self-aligning roller bearings of the rotor shaft
- pendulum suspension of the impact vibratos
- infinitely variable mechanical or hydraulic crushing edge adjustment

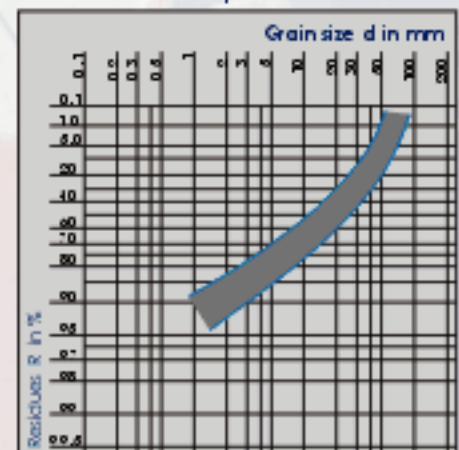
### Applications

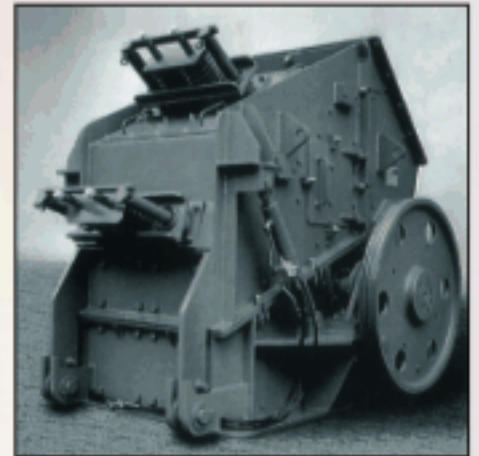
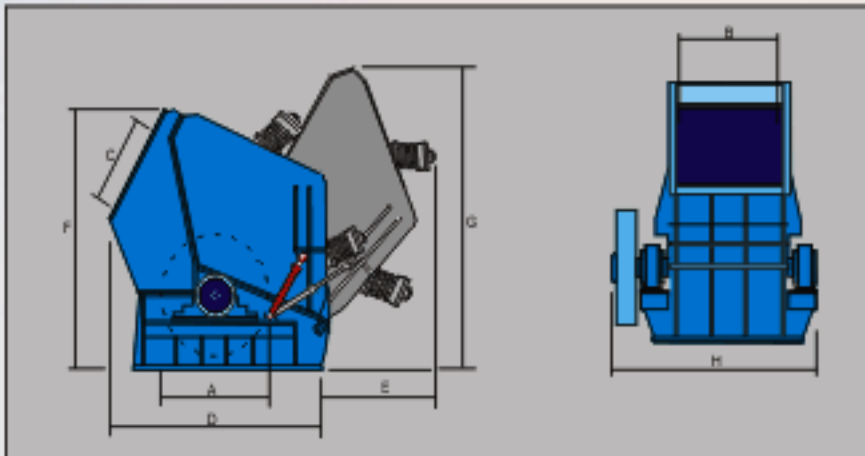
- cement and limestone plants
- coal, ore and potash mining
- building, glass and chemical industries
- steel works

Primary crusher  
Material: limestone  
Input size: 100 - 1200 mm



Secondary crusher  
Material: limestone  
Input size: 50 - 500 mm





Designation Type	Diameter of rotor A mm	Width of rotor B mm	Weight approx. kg	Throughput m <sup>3</sup> /h	Feed-size of grain mm	Power consumption kW	Assembly dimensions														
							C mm	D mm	E mm	F mm	G mm	H mm									
TSPB 0806	800	600	4600																		
TSPB 0808	800	800	5000	22-45	300	20-45	560	1400	820	1680	1950										1360
TSPB 0810	800	1000	5500																		1580
TSPB 1008	1000	800	7200																		1800
TSPB 1010	1000	1000	8200	50-80	400	50-80	690	1750	1000	2100	2420										1660
TSPB 1012	1000	1200	9200																		1900
TSPB 1210	1200	1000	13,200																		2140
TSPB 1212	1200	1200	14,500	80-130	600	75-130	830	2000	1250	2520	2940										2030
TSPB 1214	1200	1400	15,700																		2230
TSPB 1412	1400	1200	18,400																		2490
TSPB 1414	1400	1400	19,800	100-250	800	90-220	980	2380	1420	2950	3420										2550
TSPB 1416	1400	1600	21,200																		2780
TSPB 1614	1600	1400	29,300																		3030
TSPB 1616	1600	1600	32,500	150-400	900	150-350	1400	3500	1700	4150	4650										3100
TSPB 1618	1600	1800	33,500																		3300
TSPB 1816	1800	1600	41,000																		3450
TSPB 1818	1800	1800	45,000	250-450	1000	250-400	1600	3700	1950	4350	4900										3750
TSPB 1820	1800	2000	49,000																		4050
TSPB 2018	2000	1800	70,000																		4000
TSPB 2022	2000	2200	78,000	400-850	1200	350-800	1800	4300	2200	5150	5800										4500
TSPB 2026	2000	2600	86,000																		5100
TSPB 2322	2500	2200	94,000																		4600
TSPB 2326	2500	2600	102,000	800-1300	1500	750-1250	2200	5100	2600	6150	6800										5100
TSPB 2328	2500	2800	110,000																		5700

All dimensions and specifications in this catalogue are only approximate. We reserve the right of modification.

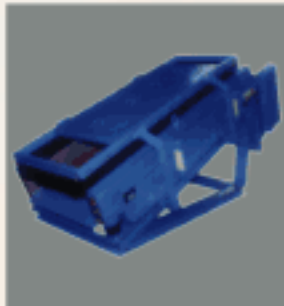
The throughputs specified are related to moderately hard limestone. In case of other applications they have to be harmonized. The weights are related to the design including two impact vibrators. Further structural sizes upon request.

To enable our experienced engineering staff to recommend the installation best suited to specific applications, answers to as many of the following questions as possible will result in a prompt and accurate solution to your crushing requirements

- |                                   |  |
|-----------------------------------|--|
| 1. Material to be crushed         | 7. Product sizes required                  |
| 2. Maximum feed dimension         | 8. Friability                              |
| 3. Approximate feed size analysis | 9. Abrasive characteristics                |
| 4. Moisture content               | 10. Do you intend close circuit operation? |
| 5. Stickiness                     | 11. Capacity desired in tons per hour      |
| 6. Bulk Density                   |  |

**OUR TECHNICAL COLLABORATORS:**

1. Single Roll Crushers, Double Roll Crushers, (Smooth & Toothed), Reversible Impact Mill, Impact Hammer Crushers, Roller Screen, Ball Mills in technical collaboration with M/s. FAM Magdeburger Förderanlagen und Baumaschinen GmbH, Germany.
2. Aggregate Crushing and Screening plants - Cone Crushers, Vertical Shaft Impactors (Zenturbo), Jaw Crushers, in technical collaboration with M/s. Maschinenfabrik Liezen Und Giesserei Ges.m.b.H.
3. Flip-flow Screens in technical collaboration with M/s. Hein, Lehmann Trenn- Und Fordertechnik GmbH.
4. Vibrating Screens (Circular and linear motion), Vibrating Feeders, Apron Feeders in technical collaboration with M/s PEYTEC Aschauer & Peyfuss OEG, AUSTRIA.
5. Turnkey Projects - Fuel and Ash handling systems for Coal, Biomass, Bagasse based power plants, Material handling system for steel, cement, paper, industry etc.



Send your enquiries to :

**TECPRO SYSTEMS (P) LIMITED**

Product Division, Unit 2, First Floor, 25, Gandhinagar First Main Road, Adyar, Chennai 600 020. Ph : +91 44 42076559, 24426027, 24425886  
 Fax : +91 44 24425922 Email : tecprochn@vsnl.net

**Kolkata**

77 A, Raja Basanta Roy Road  
 2nd Floor, Kolkata 700 029  
 Ph : +91 33 2464 9150/9156  
 Fax : +91 33 2464 7398  
 Email: tecprocal@vsnl.net

**New Delhi**

114-115, Vishwadeep Towers, District Centre, Jangpore, New Delhi 110 058.  
 Ph : +91 11 25540950 / 54 / 59  
 Fax : +91 11 25540951  
 e-mail : tecprodel@tecprosystems.com

**Dubai**

M/s. Avigo Fzco  
 Suite 410, LOB 15,  
 PO Box 18264, Jebel Ali, Dubai, UAE  
 Ph : +971 4881 4681  
 Fax : +971 4887 1297  
 Email: ata@ej@avigo.com